

Med rockish CANT TAKE MY EYES OFF YOU Lead Sheet

(INTRO)

3

YOU'RE JUST TOO

(A) + (B) + (C)

GOOD TO BE TRUE
WAY THAT I STAND

CANT TAKE MY EYES OFF YOU
THERES NO THING USED TO COMPARE
YOU'D BE LIKE THE SIGHT OF

HEAVEN TO TOUCH
YOU LEAVES ME WEAK

I WAN-NA HOLD YOU SO MUCH
THERE ARE NO WORDS LEFT TO SPEAK

AT LONG LAST
BUT IF YOU

LOVE HAS ARR-IVED
FEEL LIKE I FEEL

AND I THANK GOD I'M A LIVE
PLEASE LET ME KNOW THAT ITS REAL

YOU'RE JUST TOO

GOOD TO BE TRUE
CANT TAKE MY EYES OFF YOU

PAR-DON THE

(D)

I LOVE YOU

(E)

BA - BY AND IF ITS QUITE AL-RIGHT I NEED YOU
BA - BY DONT BRING ME DOWN I PRAY OH PRE-TTY

BA - BY TO WARM A LONE-LY NIGHT- I LOVE YOU
BA - BY NOW THAT I'VE FOUND YOU STAY AND LET ME

(1)

BA - BY TRUST IN ME - WHEN I SAY

(2)

OH PRE-TTY LOVE YOU - BA - BY LET ME

LOVE YOU - YOU'RE JUST TO (You)

Rat.

Rat whole thing to ♯ option to D♯ at ♯

CANT TAKE MY EYES OFF YOU.

Tpt

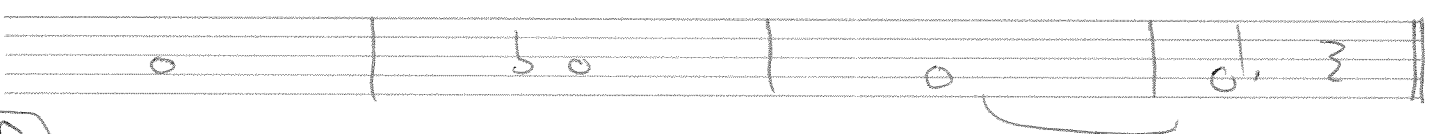
INTRO



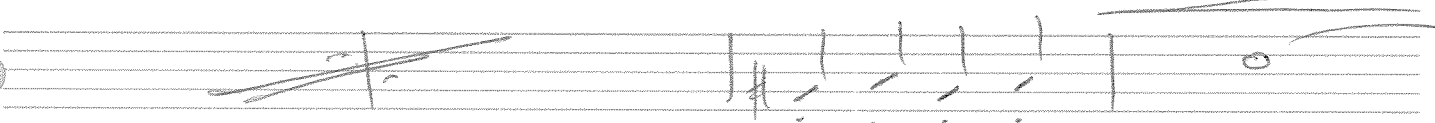
(A)+(B)



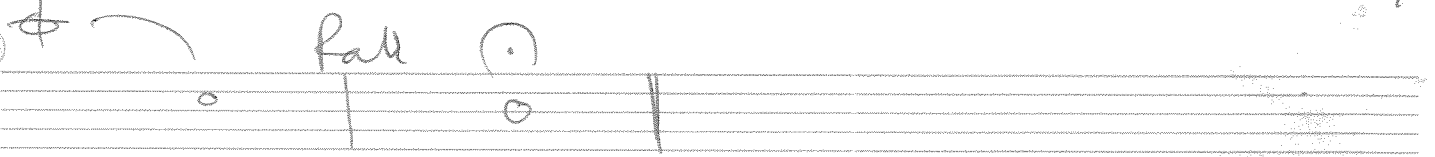
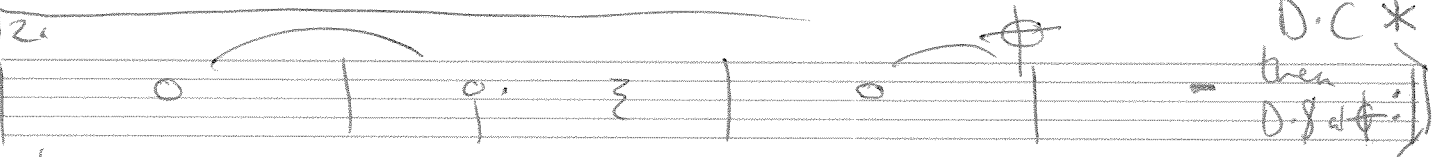
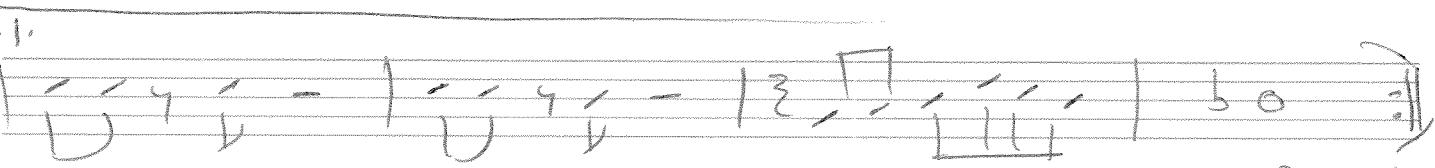
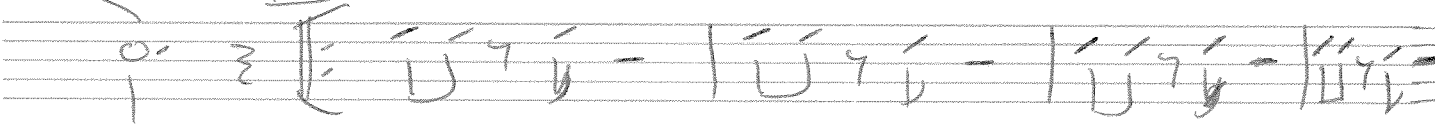
(C)



(D)



(E)



D.C.*
then
D.C.*

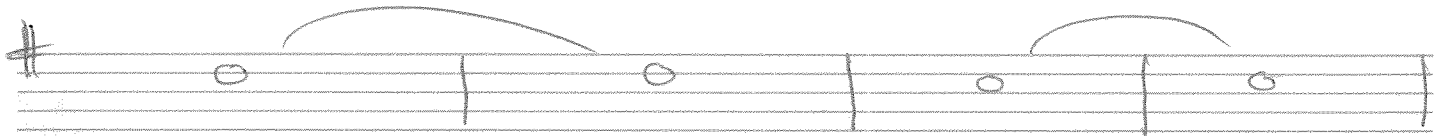
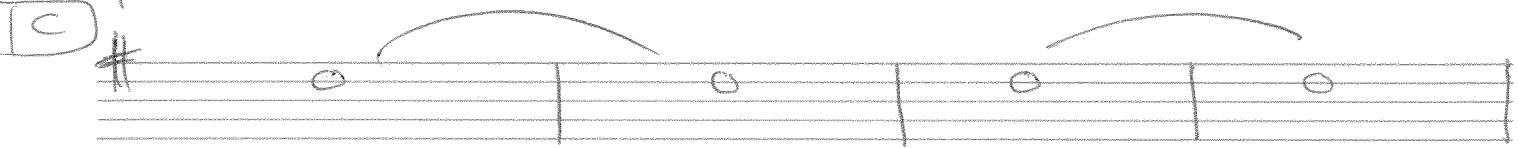
CAN'T TAKE MY EYES OFF YOU

Alto

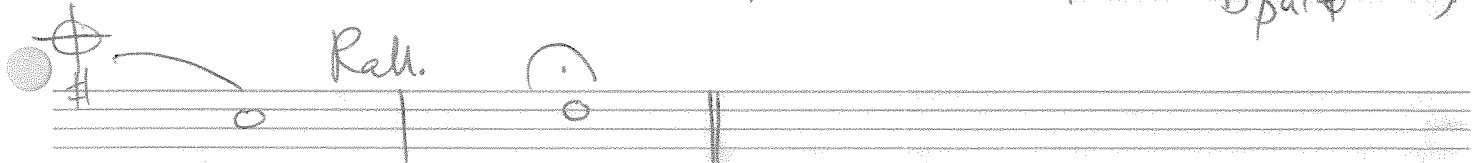
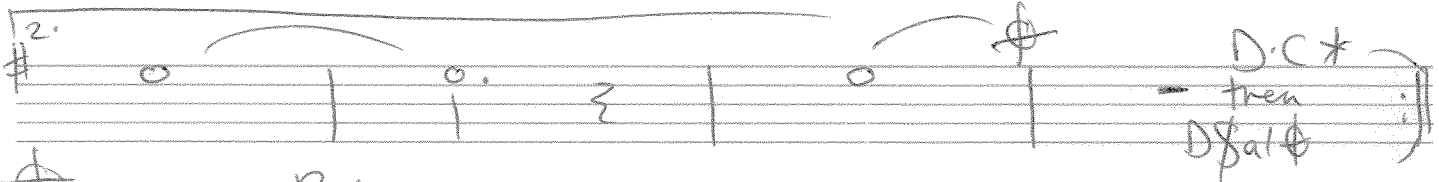
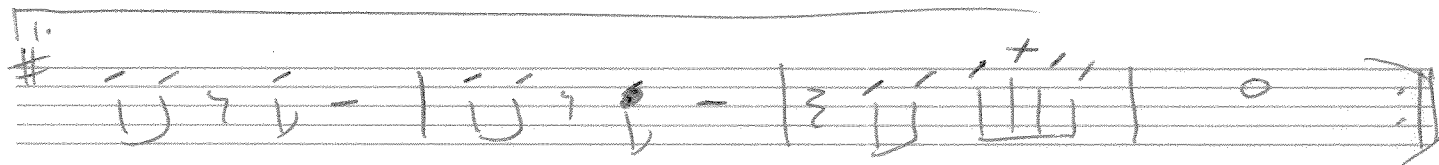
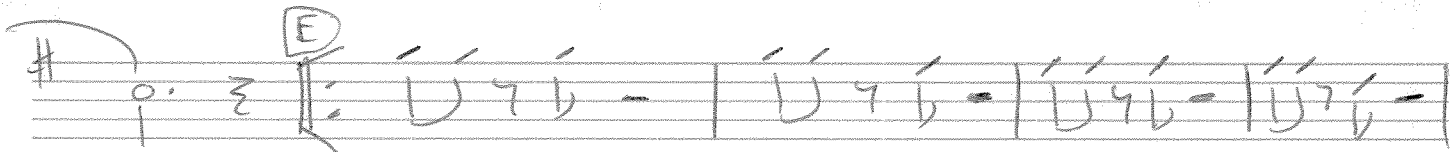
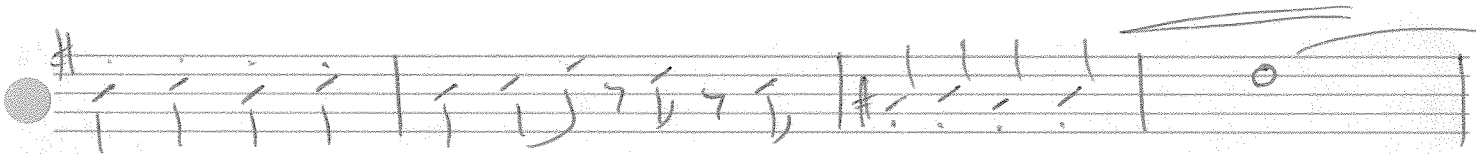
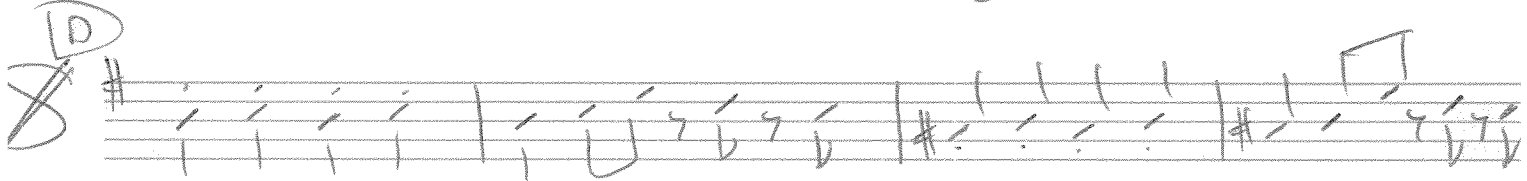
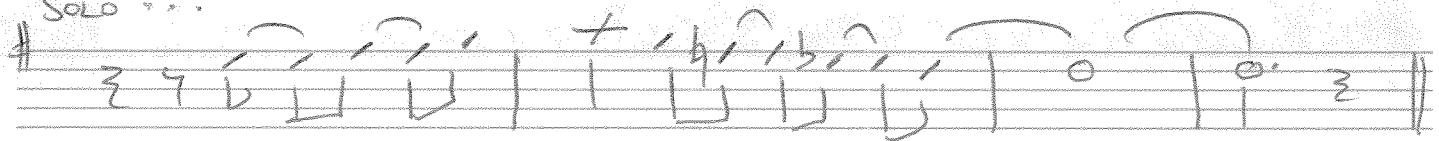
INTRO



(A) + (B)



Solo ...



CAN'T TAKE MY EYES OFF YOU

Trombone

INTRO

Musical staff with a 4-measure rest.

A+B

Musical staff with a repeat sign and a 6-measure rest.

Section C: Four staves of music with notes and rests.

Section D: Two staves of music with notes and rests.

Section E: Musical staff with notes and rests.

Musical staff with notes and rests.

Musical staff with notes and rests, including 'D.C.* then Salt' and 'Rall' markings.

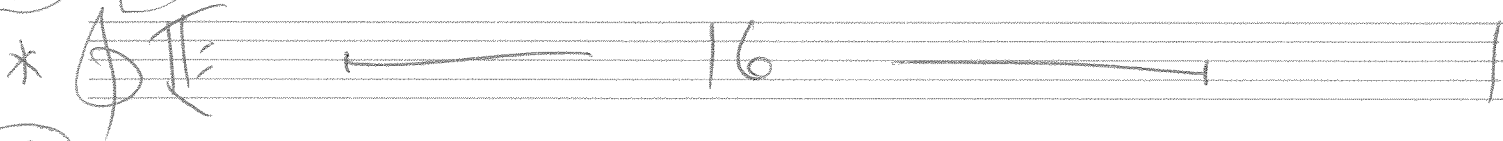
CAN'T TAKE MY EYES OFF YOU.

Tenor.

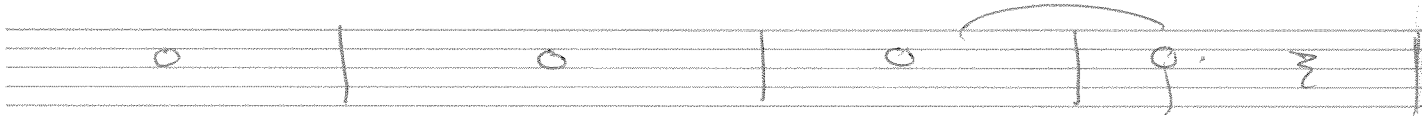
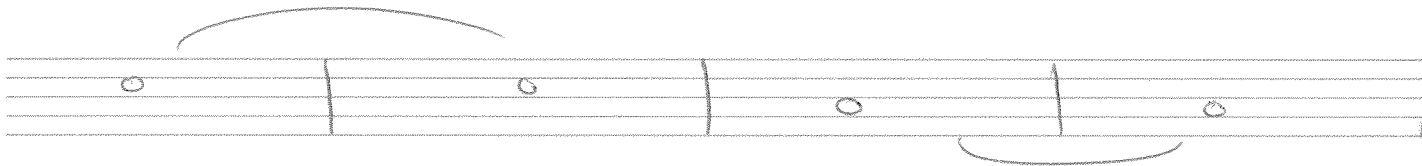
INTRO



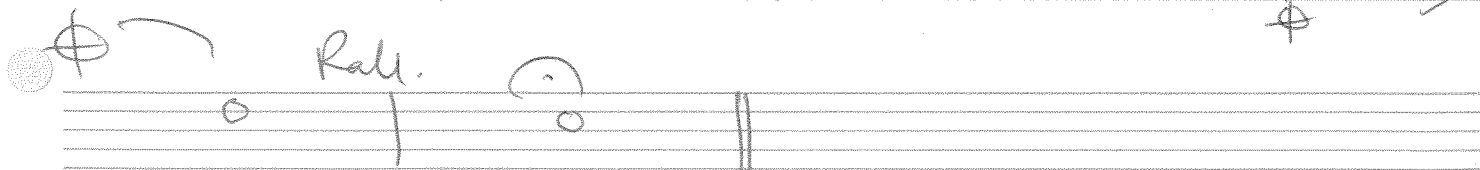
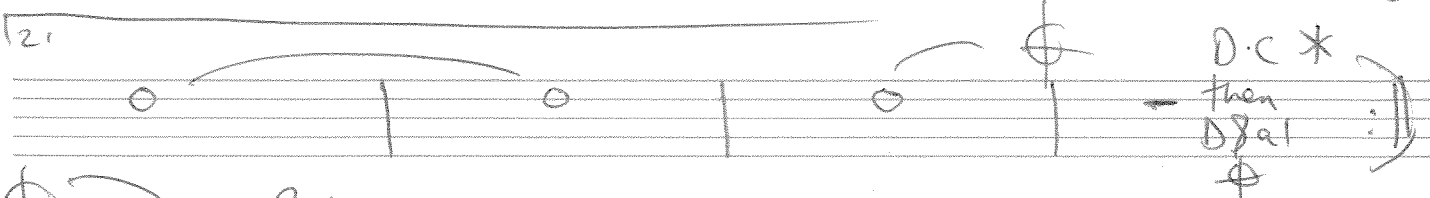
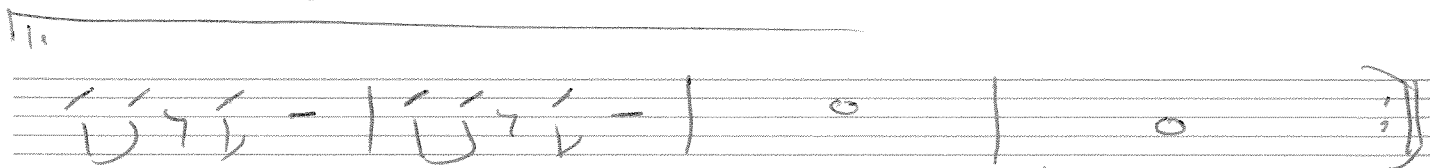
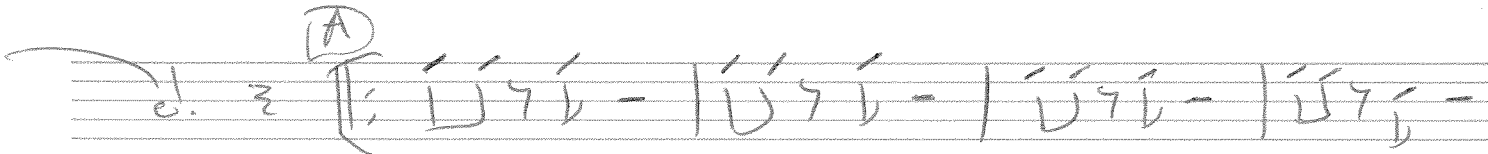
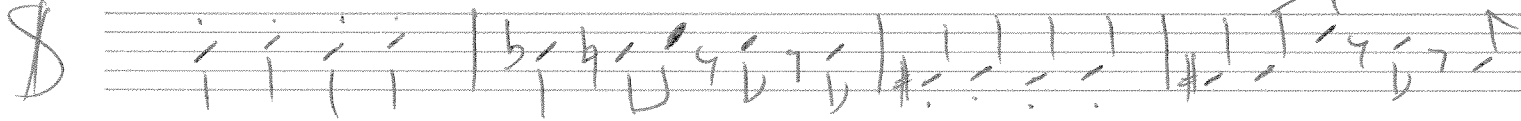
A + B



C



D



med-rock

CAN'T TAKE MY EYES OFF YOU CHORUS (13)

INTRO

Staff 1: B^b | $B^b \Delta^7$ | $B^b \Delta^7$ | B^b

A+B+C

Staff 2: B^b | $B^b \Delta^7$ | $B^b \Delta^7$ | $B^b \Delta^7$

Staff 3: $B^b \Delta^7$ | $B^b \Delta^7$ | E^b | E^b

Staff 4: $E^b m$ | $E^b m$ | B^b | B^b

Staff 5: $\frac{E^b}{B^b}$ | $E^b m$ | B^b | B^b

Staff 6: Cm^7 | F^9 | B^b | $B^b \Delta^7$

Staff 7: Cm^7 | F^9 | B^b | $G^7 \#9$

E

Staff 8: Cm^7 | F^9 | Dm^7 | Gm^7

Staff 9: Cm^7 | F^9 | $B^b \Delta^7$ | $G^7 \#9$

Staff 10: Cm^7 | F^9 | Dm^7 | Gm^7

Staff 11: Cm^7 | F^9 | F^9 | $D.C. (A)$
then $D^b \Delta^7$

$\#$

Staff 12: $B^b \Delta^7$ ||

straight 8's Pop. CAN'T TAKE MY EYES OFF YOU Drums

Intro light hi-hat

play 4

A + B + C sim.

play 16

build toward D

play 16

D groove w/hits!

Drum notation with hits

Drum notation with hits and a fill

fills into groove E straight 8's

play 12

Drum notation with hits and a light fill

2. big fills
DS at

Roll

Drum notation with a roll

Drum notation with a roll

Empty drum staves